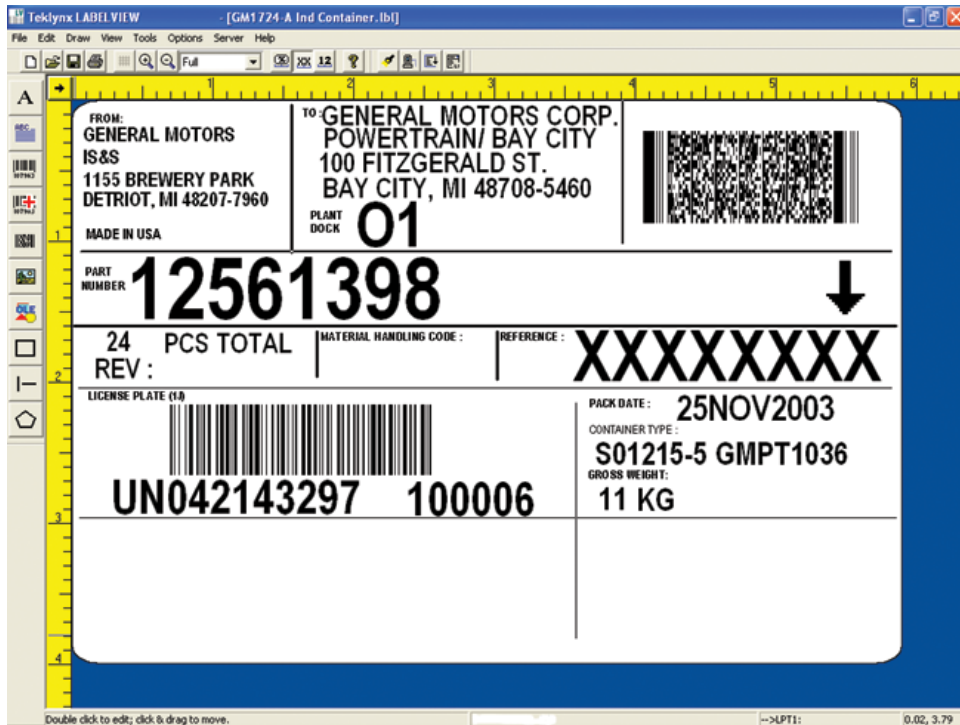


LABEL DESIGN SOFTWARE



Unlock the Power of your Thermal Printer

No thermal labeling system is complete without software to design and print labels. Teklynx Software makes label design and printing easy. Your thermal printer shipped with a driver that allows you to print labels from your existing programs. But you'll waste valuable time designing labels and they may not include all information you need.

Teklynx Software allows you to unlock the power of your printer. With Teklynx you can create:

- Different size labels including multi-column labels
- Over 70 bar code symbologies, linear and 2-dimensional
- Keyboard entry fields for information that changes at print time (sizes, flavors, lot numbers, etc.)
- Data from databases, spreadsheets and text files
- Sequential numbering, serial numbers, package counts (1 of 6, 2 of 6, etc.)
- Automatic date and time stamping, including future date codes
- Imported graphic images from BMP, PCX, JPG, TIF and other files

Teklynx supports over 1,000 specialized thermal and thermal transfer printers (including all models from Datamax, Zebra, Brady, Sato and Intermec), with new printers added constantly. Even if you don't have a thermal printer you can design and print sophisticated labels using any Windows laser printer.

Each Teklynx software package is available in a version that works best for you, From simple labels to complex; from a single license for one printer to network versions that allow anyone to print to multiple printers.



6237-1

MENKE

TEL: 800 - 231 - 6023
FAX: 562 - 921 - 1184

TEKLYNX Bar Code Label Design & Printing Software

Teklynx is the world's leading Automatic Identification and Data Collection (AIDC) software publisher. Teklynx Software is designed for the specific labeling needs of industry, retail, transportation and government. Add in support for virtually every brand of thermal printer, plus any Windows printer and you have the flexibility to meet your labeling requirements now and in the future.

Label Matrix®

Easy-to-use label design software with an intuitive interface and helpful design wizards.

"Wizards" guide you through label setup, image design, database access and printer setup

Printer support for 1,000+ thermal printers plus any Windows printer

Includes over 100 compliance templates

"Print Only" version included

Single or multi-user network versions



Labelview™

Powerful Label Design and Integration Software for all users, beginning to advanced.

Advanced Radio Frequency Identification (RFID) Support

Simple, yet powerful design interface

Access all popular database types

Printer support for 1,000+ thermal printers plus any Windows printer

Integration with Pocket Labelview for portable PCs

Single or multi-user network versions



Codesoft®

Advanced Label Design and Integration Software offering unmatched flexibility and power.

Data connectivity and security for enterprise-wide label printing

Drag and drop label design

Powerful programming and printing options for advanced users

Advanced RFID support

Single user, network and print-only versions

